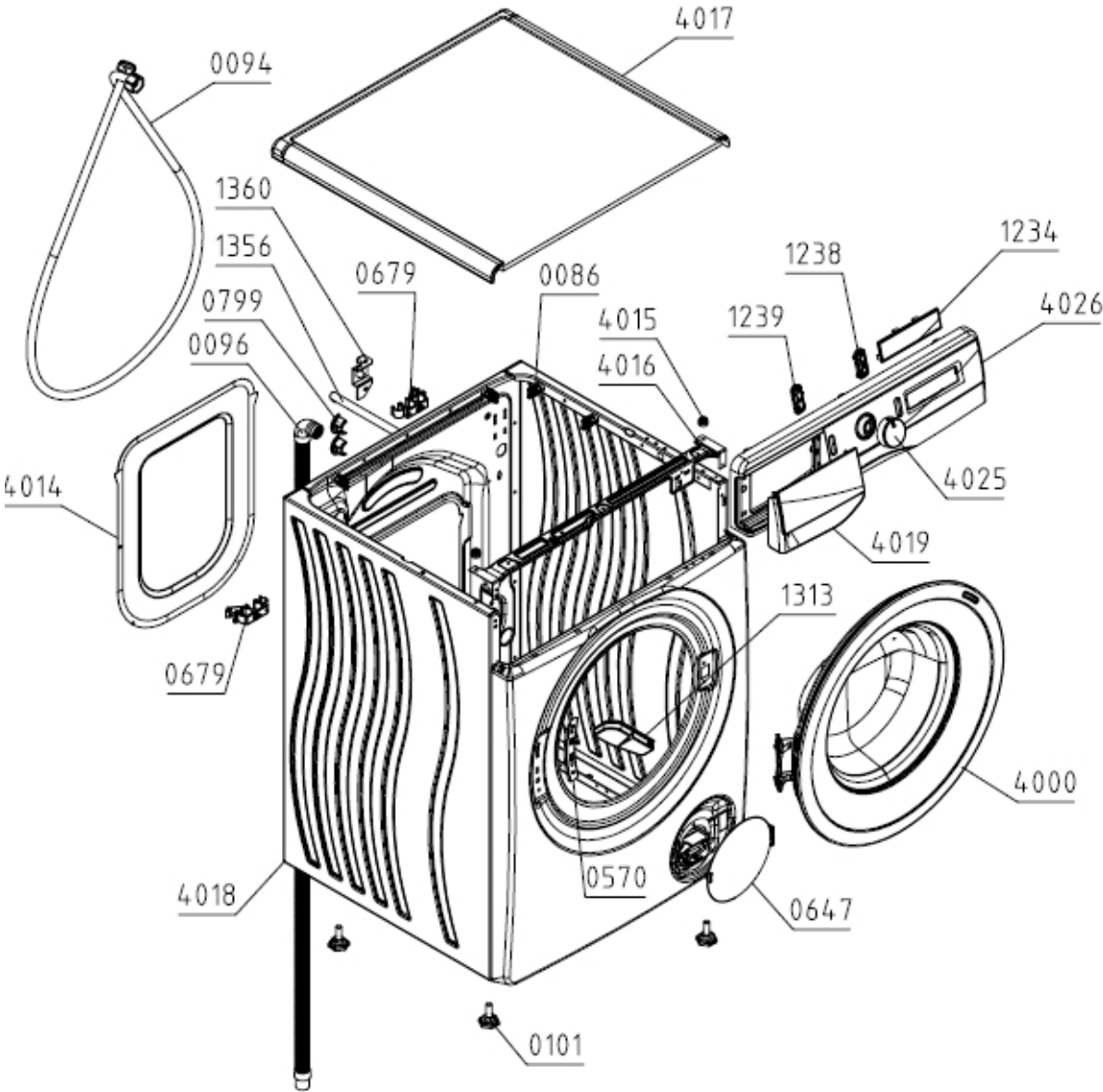


Type (Modèle Usine) PS22/16140
Modèle WFGP901439VM
ID Produit / ART. No 741807

Marque HISENSE
Version 29.06.2022
N° d'Index 01

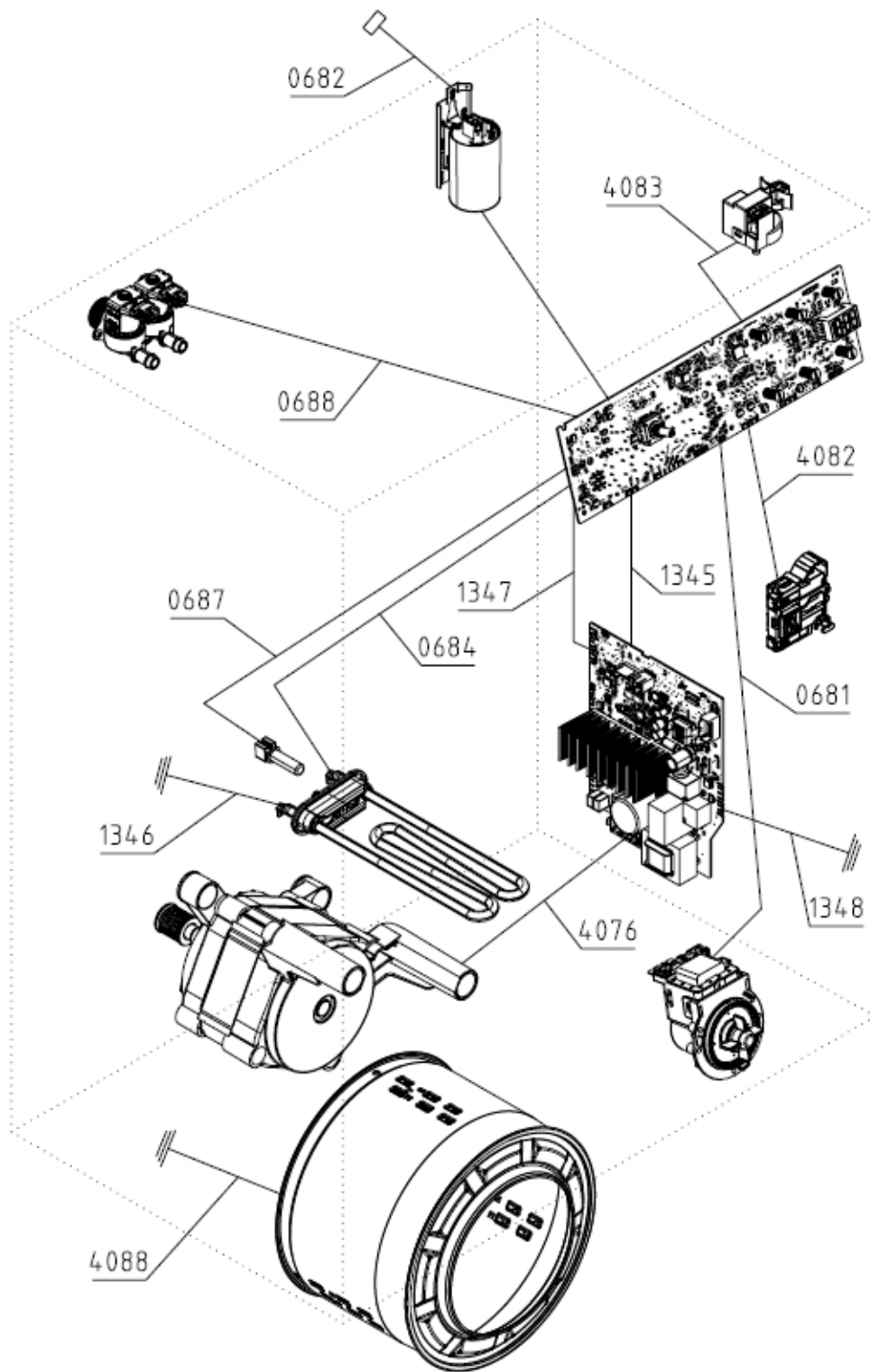
021447



Position	Identifiant	Désignation	Quantité	Validité	Extra ID
0086	547104	CLAMP PS	11		
0094	157474	SUPPLY HOSE HV PS	1		
0096	699606	DISCHARGE HOSE NK PS-15	1		

Position	Identifiant	Désignation	Quantité	Validité	Extra ID
0101	816544	ADJUSTABLE FOOT PS-10 KPL	4		
0570	466627	HINGE PLATE PS-15	1		
0647	579303	FILTER COVER PS-15 KPL	1		
0679	877538	HOSE HOLDER PS-22	2		
0799	148999	RUBBER SEAL PS-03	1		
1234	846693	DISPLAY PLATE B1 PS-22	1		
1238	846677	PAUSE KEY PS/SP-22	1		
1239	846676	SWITCH ON KEY PS/SP-22	1		
1356	466625	BLOCKING ROD 600 PS-15	2		
1360	587350	TRANSPORT RODS SUPORT	2		
4000	863875	DOOR PS-15 ČR KPL	1		
4014	466535	REAR WALL COVER PS-15 F	1		
4015	578966	WORKTOP PLUG PS-15 ASSY	2		
4016	871693	CONTROL PANEL HOLDER PS-15 F	1		
4017	579100	WORKTOP 60 PS-15 KPL	1		
4018	714419	HOUSING 60-1600 PS-15 LA070-S	1		
4019	865168	SOAP DISPENSER HANDLE PS-22 HSN SIGN	1		
4025	863443	CONTROL KNOB 9005 PS/SP-22 KPL	1		
4026	865094	CONTROL PANEL B1 PS-22 FR/NS HSN SIG	1		

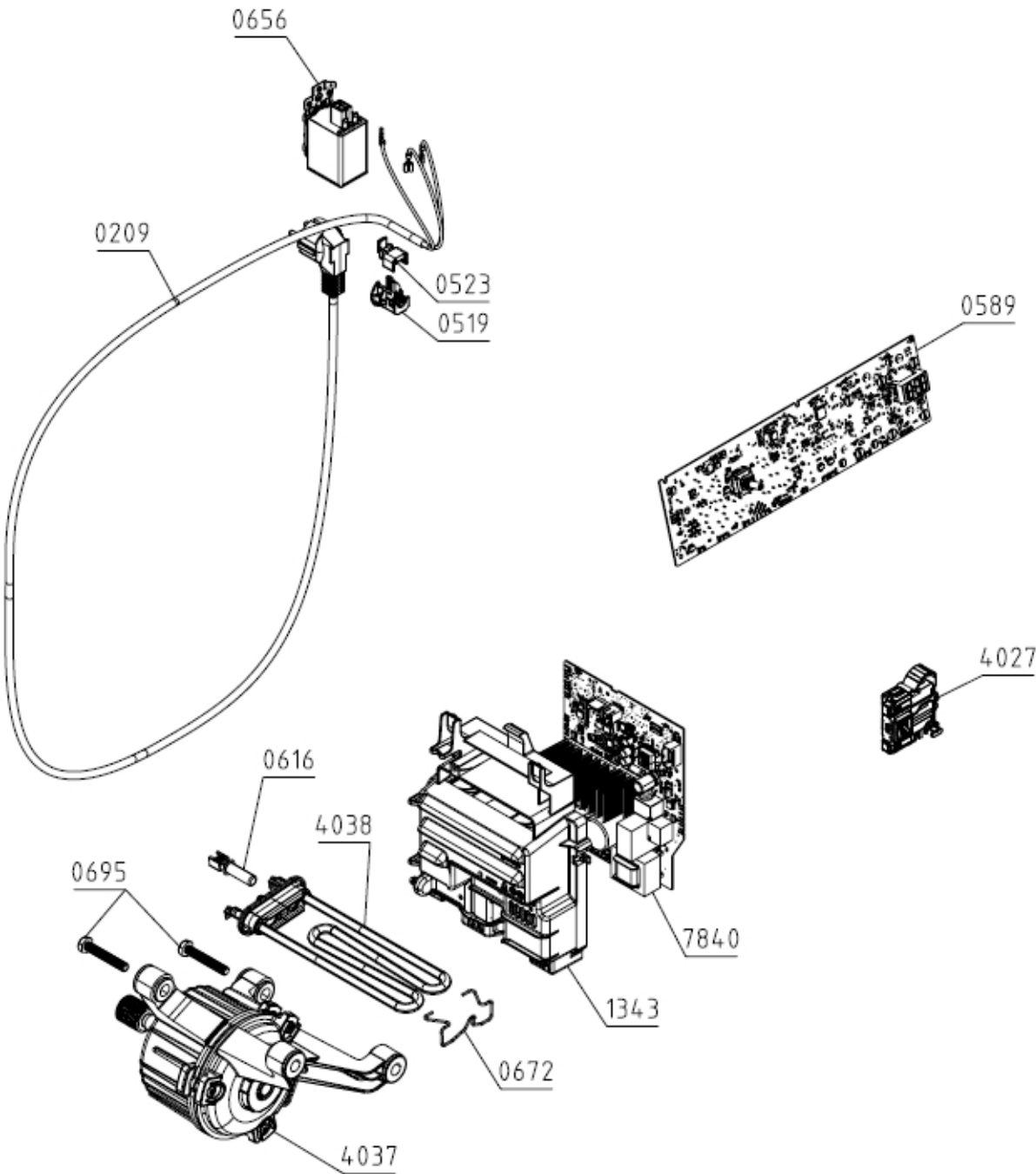
023457



Position	Identifiant	Désignation	Quantité	Validité	Extra ID
0681	870460	WIRING HARNESS PUMP 60/EN PS-22 N	1		
0682	870423	WIRING HARNESS SUPPLY 60/EN PS-22 N	1		
0684	870431	WIRING HARNESS HEATER 60/EN PS-22 N	1		
0687	870456	WIRING HARNESS - NTC 60/EN PS-22 N	1		
0688	870430	WIRING HARNESS VALVE 60/EN PS-22 N	1		
1345	870436	WIRING HARNESS SUPPLY MCU 60/EN PS-22 N	1		

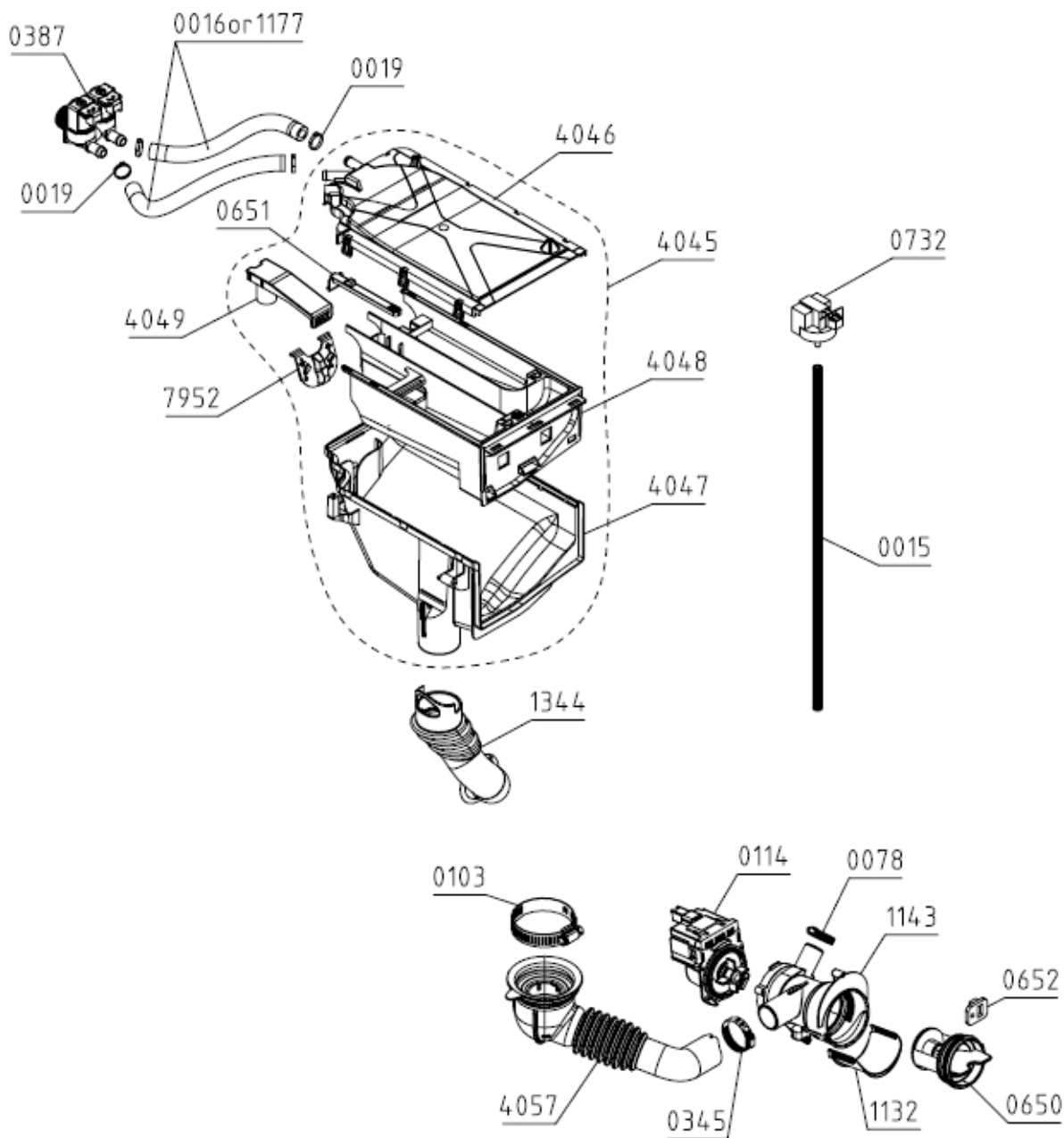
Position	Identifiant	Désignation	Quantité	Validité	Extra ID
1346	870419	WIRING HARNESS EARTHING HEATER PS-22 N	1		
1347	870450	WIRING HARNESS COMMUN.MCU 60/EN PS-22 N	1		
1348	870297	EARTHING MCU PS-22 N	1		
4076	870296	WIRING HARNESS MOTOR EN PS-22 N	1		
4082	870418	WIRING HARNESS DOOR SWITCH EN PS-22 N	1		
4083	870417	WIRING HARNESS SENSOR LEVEL EN PS-22 N	1		
4088	870168	GROUNDING DRUM BM PS-15 N	1		

023458



Position	Identifiant	Désignation	Quantité	Validité	Extra ID
0209	132222	CABLE WITH PLUG H05VV-F3G1.0 1550	1		
0519	667400	RUBBER SEAL	1		
0523	667401	CLIP FOR INITIATION SLEEVE	1		
0589	871539	CONTROL UNIT PS-22/60-A-14-9-NS-E-M	1		
0616	658696	TEMPERATURE SENSOR	1		
0656	431466	RFI-FILTER 1,5MH H.A.L.	1		
0672	194555	HEATER CLAMP PS-03 CA	1		
0695	587311	SCREW N PT8X30-4.8-F-A2F	2		
1343	846697	CONTROL UNIT HOLDER MCU PS-22	1		
4027	579333	DOOR LOCK PS-15	1		
4037	816211	ELECTROMOTOR BPM 54/60 KINGCLEAN	1		
4038	602720	TUB.HEATER 230V/1700W	1		
7840	843135	SUPPLY UNIT BM-9.33 PS-22 KING3	1		

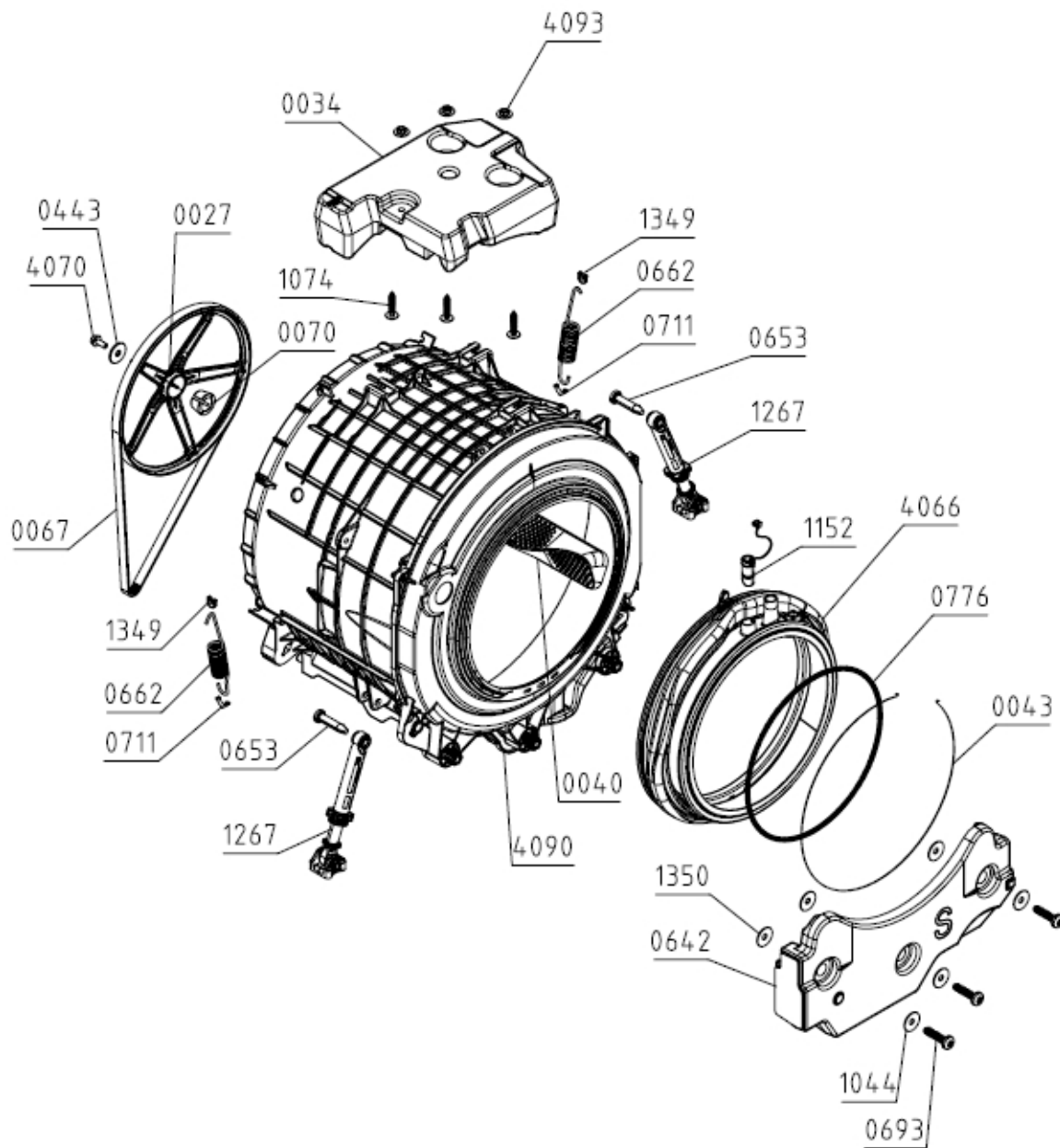
024424



Position	Identifiant	Désignation	Quantité	Validité	Extra ID
0015	711818	HYDROSTAT HOSE PS-03 L555	1		
0019	314400	CLAMP - PLASTIC D 16	4		
0078	498292	CLAMP D28,6	1		
0103	548401	CLAMP - WIRE PS D 65	1		
0114	629232	DISCHARGING PUMP ZS BPX2-245L LEILI	1		
0345	537874	CLAMP - WIRE D 38	1		
0387	789799	ELECTRO VALVE DOUBLE MT ELBI	1		
0650	716300	FILTER INSERTION E PS-15	1		
0651	579171	SNAP PIN PS-15	1		
0652	587438	FILTER SHOCK ABSORBER	1		
0732	797414	WATER LEVEL SENSOR ST-545 NS METALFLEX	1		

Position	Identifiant	Désignation	Quantité	Validité	Extra ID
1132	333909	DISCHARGE CHANNEL PS-10	1		
1143	333903	FILTER BOX PS-10	1		
1177	309930	HOSE PS D15X260	2		
1344	838776	DETERGENT HOSE PS-20	1		
4045	865319	SOAP DISPENSER BOL PS-15 KPL	1		
4046	466586	SOAP DISPENSER LID PS-15 ASSY.	1		
4047	865317	SOAP DISPENSER HOUSING BOL PS-15	1		
4048	579190	SOAP DISPENSER DRAWER PS-15	1		
4049	672929	SOFTENER INSERT PS-15	1		
4057	590300	HOSE TUB-FILTER PS-15 KPL	1		
7952	466608	LIQUID DETERGENT INSERT PS-15	1		

025408



Position	Identifiant	Désignation	Quantité	Validité	Extra ID
0027	339066	BELT PULLEY PS-10	1		
0034	338900	COUNTERWEIGHT - UPPER PS-10	1		
0040	664610	DRUM RIB WITH SHOWER 60 PS-15	3		
0043	853975	WIRE CLIP D350 KPL	1		
0067	111622	BELT POLY-V 6EPJ 1260 OPTIBELT	1		
0070	587405	PULLEY SLEEVE 1200 PS-03	1		
0443	234660	WASHER 10,5X36X3	1		
0642	686252	FRONT WEIGHT PS-15	1		
0653	587313	TUB SHOCK ABSORBER PIN PS-03 000	2		
0662	705600	TUB SPRING 60 PS-15	2		
0693	587309	SCREW PT100X50-WN5452-50IP-EJOT-A2K-TORX	3		
0711	587346	SUPPORT SPRING INSERT PS-03 040	2		

Position	Identifiant	Désignation	Quantité	Validité	Extra ID
0776	122062	SPRING CLAMP PS-03	1		
1044	819493	WASHER D34/D10,5	3		
1074	290070	SCREW	3		
1267	560111	TUB SHOCK ABSORBER ASSY 54/60 PS-15	2		
1349	857749	SUPPORTING SPRING INSERT-CABINET PS-21	2		
1350	820573	WASHER 45X28X1,5-A2F	3		
4066	576360	DOOR SEAL PS-15	1		
4070	621649	SCREW M10X20-10.9-BR	1		
4090	871982	TUB WITH DRUM CA 60-1400 UL PS-15/22-S	1		
4093	548358	NUT KPL	3		